

Sydney Domestic Airport Terminal 2

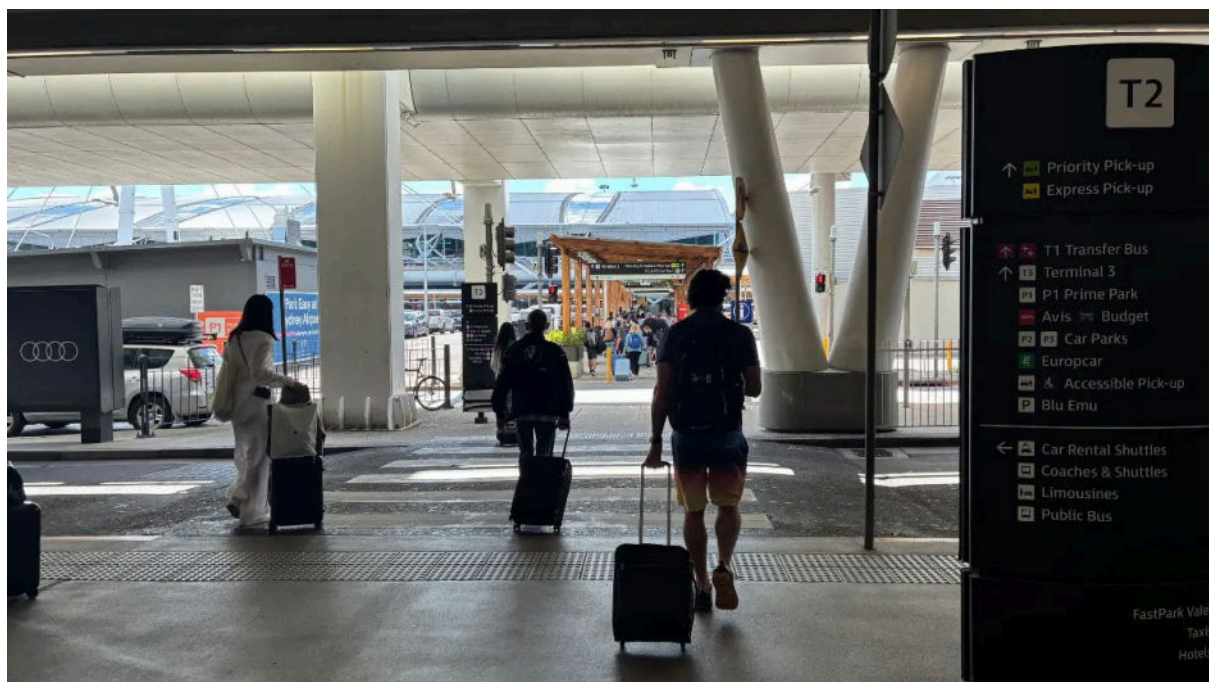
Pickup Instructions for Jetstar and Virgin Arrivals:

Take advantage of our complimentary airport shuttle bus service to get to East Coast Car Rentals' Sydney Branch: After you have collected your luggage, please call [1 800 474 258](tel:1800474258) or [\(+61\) 07 5555 8908](tel:+610755558908)

After collecting your luggage, make your way to the shuttle pick-up area using the steps below.

Step 1 – Exit & Cross to P1 Walkway

Exit T2 Arrivals and cross the pedestrian crossing and traffic lights toward the P1 walkway and take the first right where you see the 'Priority & Express Pick-up' sign.





Step 2 – Continue Along P1 Walkway

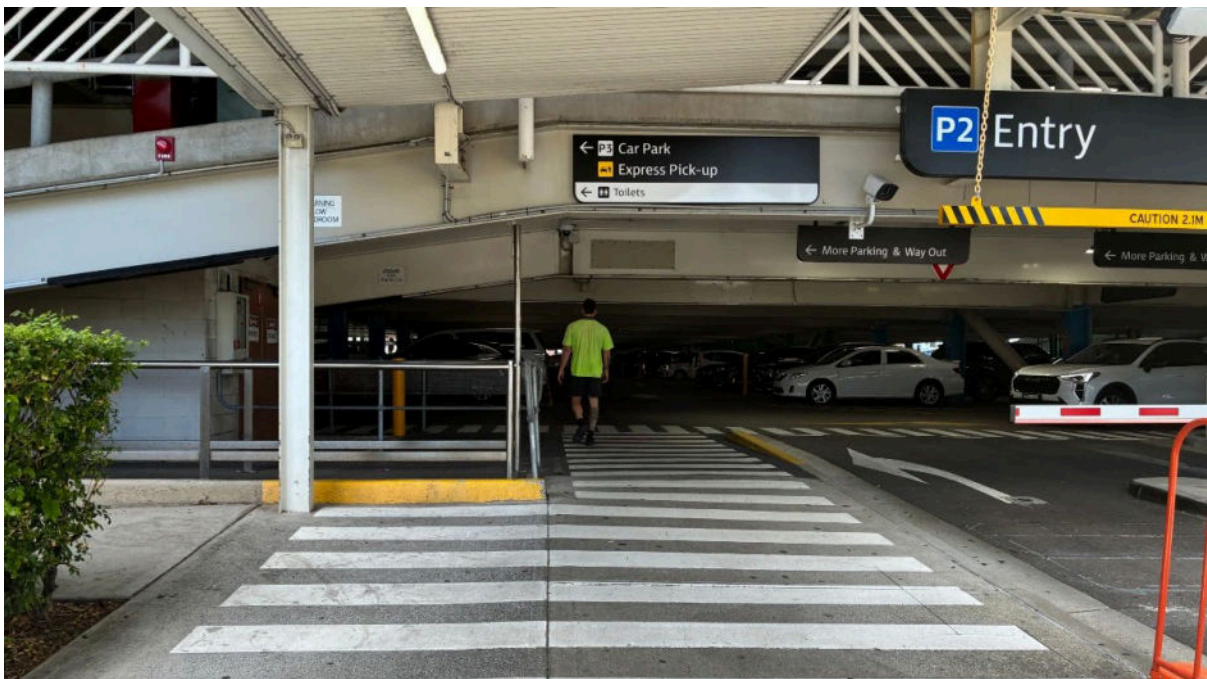
Follow the covered P1 walkway and continue past the Priority Pick-up area





Step 3 – Enter P2 Car Park

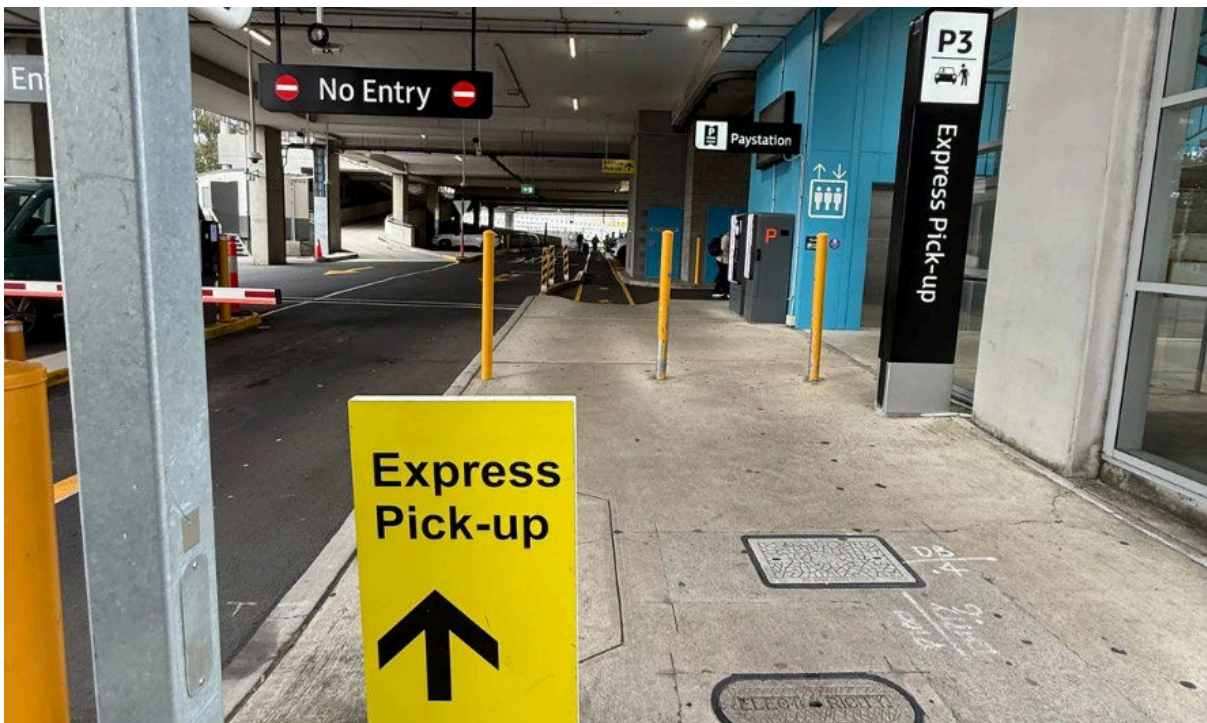
Enter the P2 car park and continue along the pedestrian path, passing the bathrooms. Turn left to follow the signs for 'Priority and Express Pick-up.'

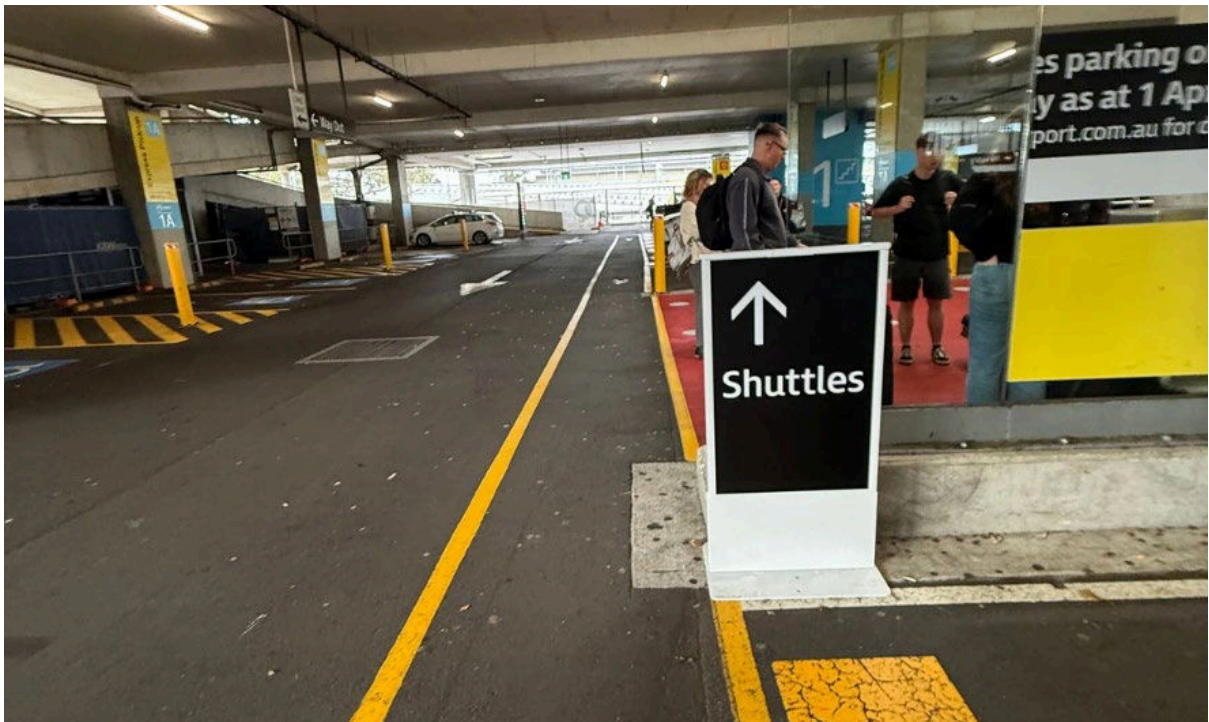
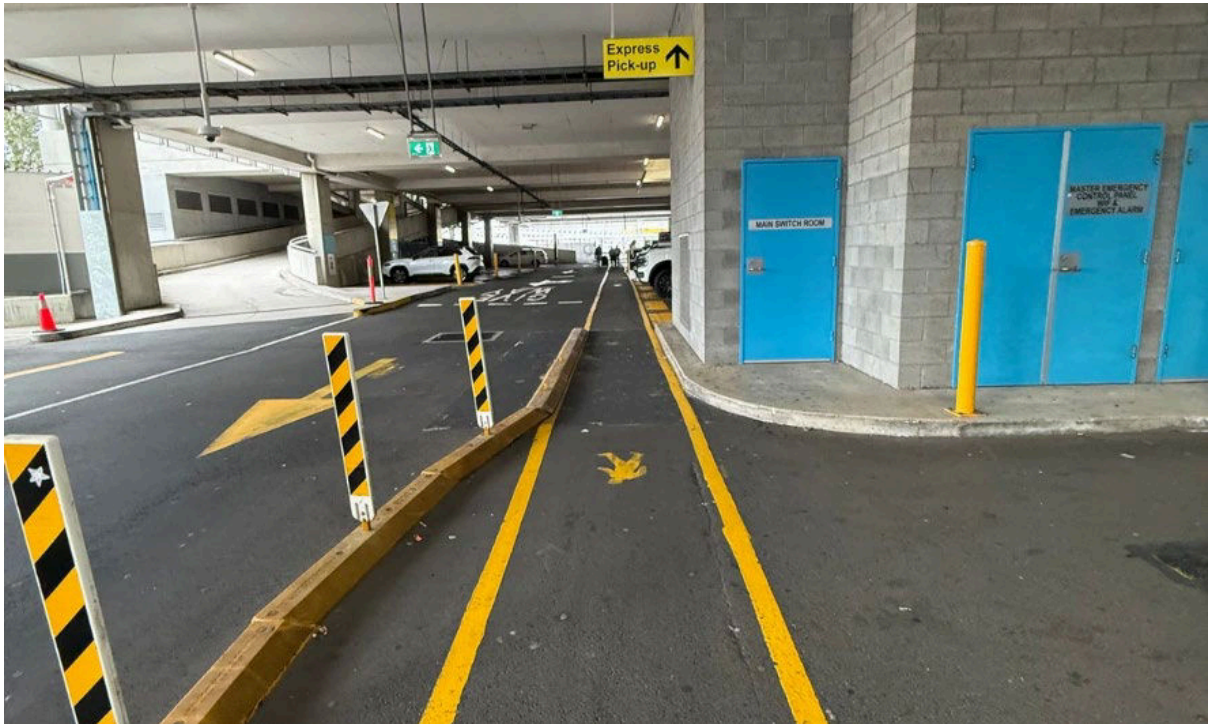




Step 4 – Cross & Continue Straight

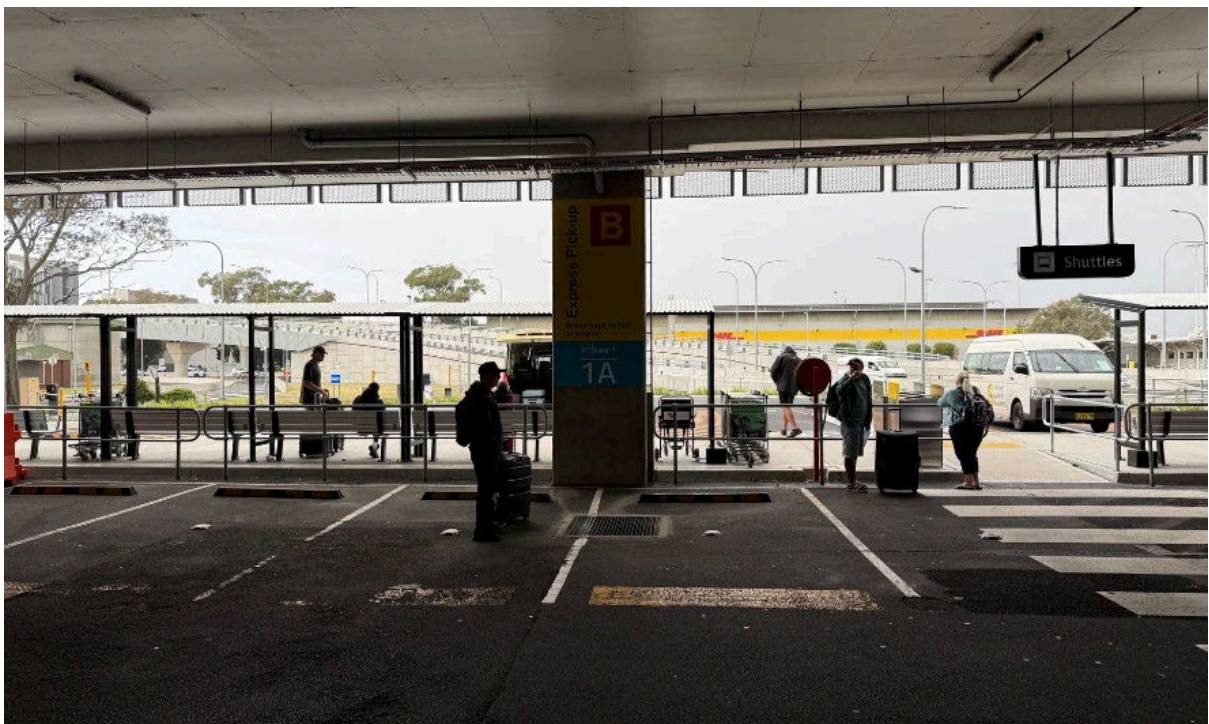
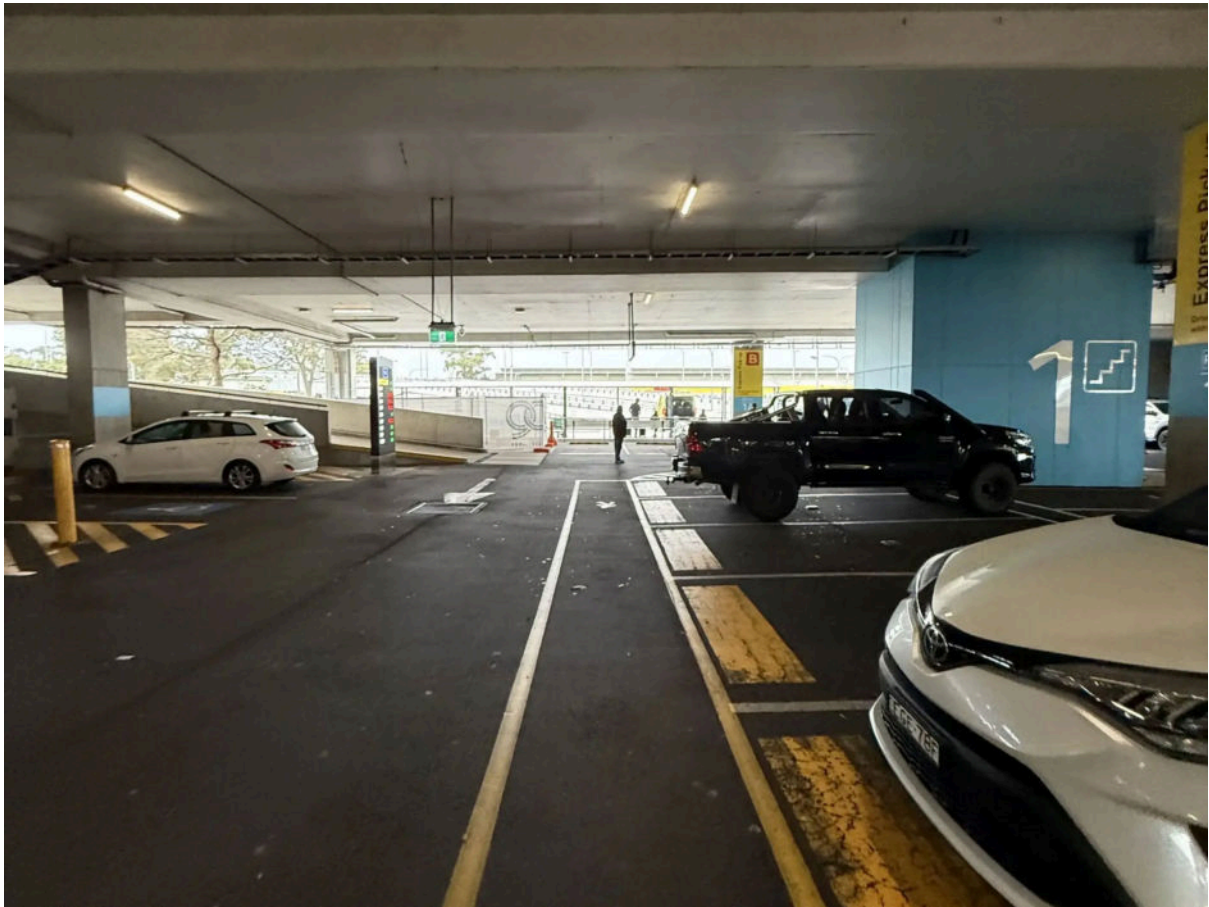
Cross the road, walk past the P3 elevators, and continue straight.





Step 5 – Walk to Shuttle Area

Continue straight past the Express Pick-up waiting area toward the entrance.





You've made it! If one of our welcoming shuttle bus drivers isn't here already, they will be shortly. Thank-you for renting with East Coast Car Rentals, we hope you enjoy your time here in Sydney.